

Item	Parameter
Plate size	800mmX800 mm
Filtering pressure (Max.)	10 bar at normal tem.
No. of chamber plates	39Pcs +1 head plate +1 end plate
Total chamber volume	583L/cycle
Design filtering temperature	0-90 deg. C
Filtration area	40 m <sup>2</sup>
Cake thickness	30mm
Chamber plate thickness	60mm
Hydraulic pressing pressure	25Mpa
Hydraulic protection pressure	29Mpa
Max. stroke of pressing board	450mm
Diameter of hydraulic Cylinder	200mm
Material of filter pack	Polypropylene
Feed inlet diameter	(mm)DN65
Wash, effluent hole diameter	(mm)DN40
Power for oil pump	4Kw

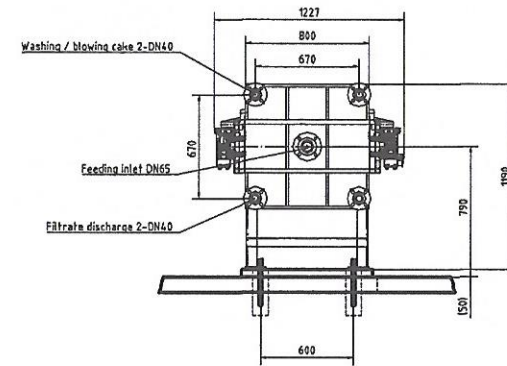
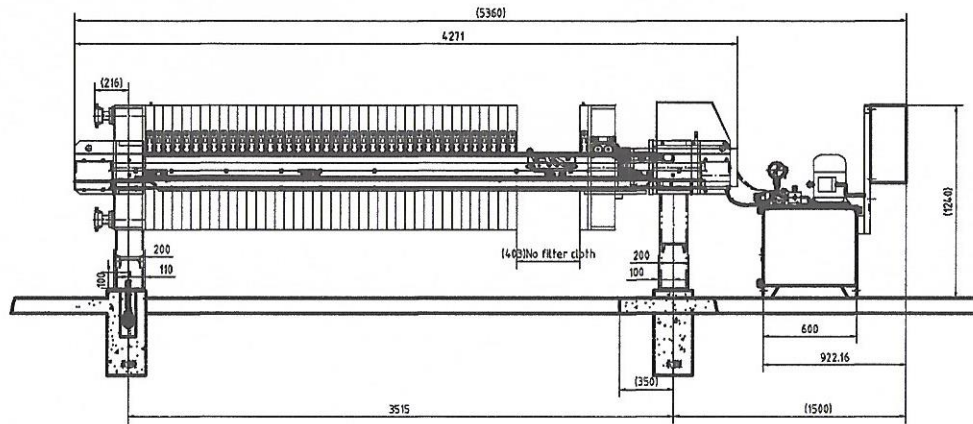
Style: Chamber

Side bars in solid rectangular steel section

Materials

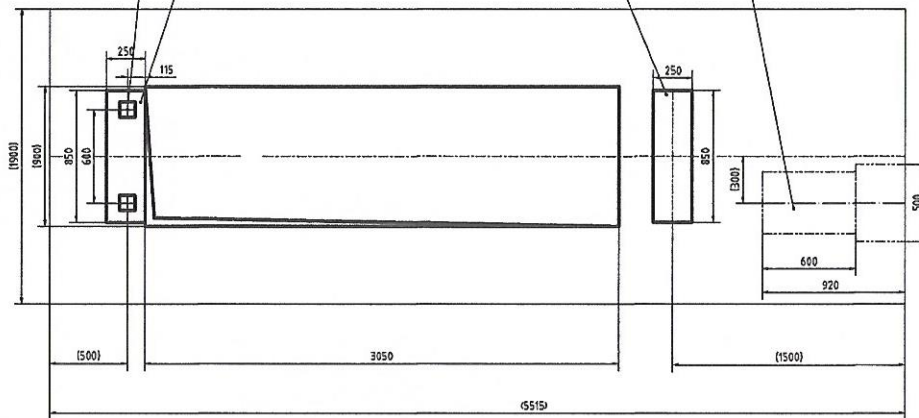
Parts in contact with product: Polypropylene

CAD



Foundation view

2-100X100 deep 300 embedded anchor bolt    Install head stock    Install cylinder mount    Install hydraulic power unit and electric control cabinet



Main parameter list

Item	Parameter	Item	Parameter
Filtering pressure (MPa)	<1.0	Max. stroke distance of piston (mm)	450
Max. feeding temperature (°C)	90	Nominal diameter of hydraulic cylinder (mm)	200
Chamber depth (mm)	40	Max. hydraulic protecting pressure (MPa)	29
Thickness of chamber plate (mm)	60	Max. Closing pressure (MPa)	25
Quantity of chamber plate (pcs)	39	Total weight (Kg)	3500
Filter area (m <sup>2</sup> )	40	Motor power of oil pump (KW)	4.0
Chamber volume (m <sup>3</sup> )	0.58		

rev.	description	drawn	checked	approved	date
Mark No. According as Signature Date		X10AZ40.800-UK		S1209733	
Designed by Peng Xuebo Approved by		Chamber filter press		Character of drawing Weight Scale	
Drawn by		Foundation view		1:15	
Checked by					
Date					